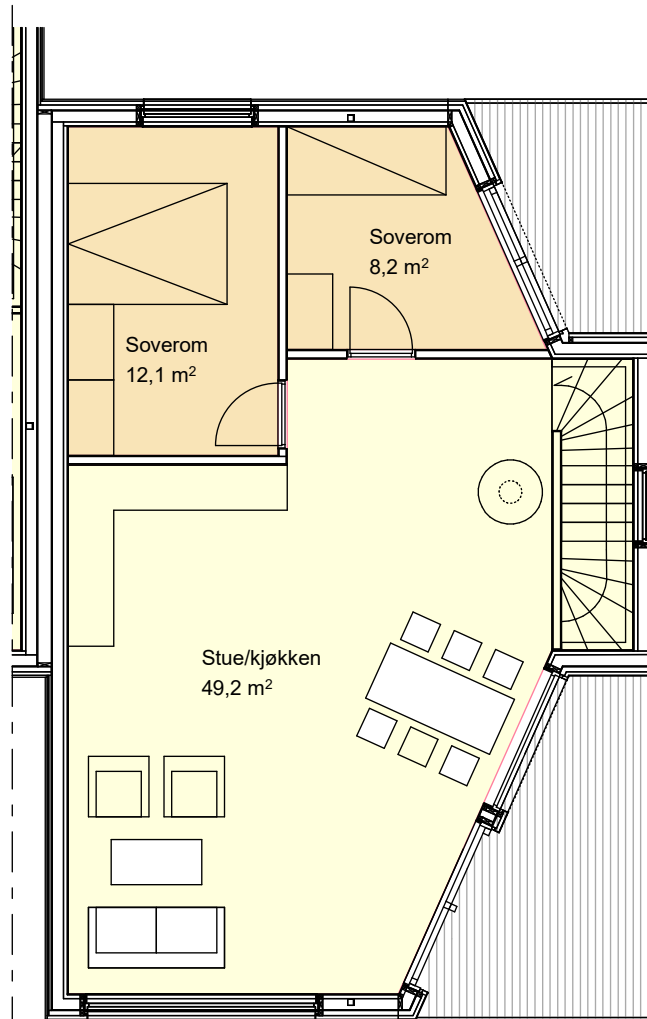
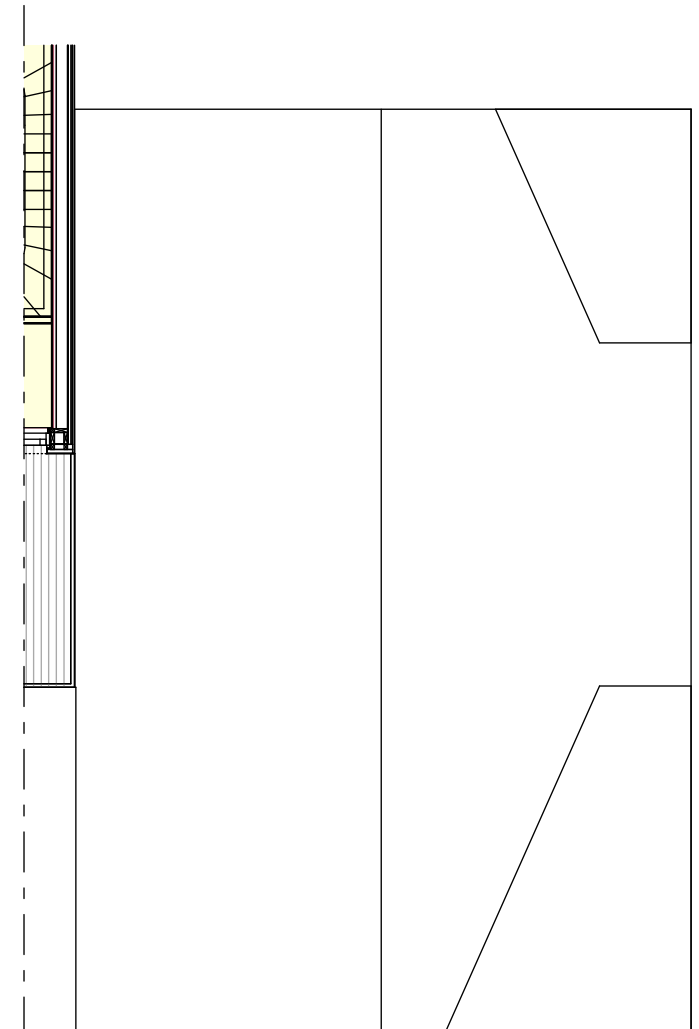


Plan 1



Plan 2



Plan 3

Bygg 19
 1. etasje: 51,8m2
 2. etasje: 70,9m2
 SUM BRA: 122,7m2

TotalProsjekt AS			
LYSAKER / DRAMSVEIEN 509			
Nivå: Salgstegning	Mål: 1:100	Tegnet Mona Sæther	Dato: 16.03.16
BYGG 19, PLANER			Tegn.nr. - Rev.